



PPP New Schools

PPP New Schools

- Public-Private Partnership of the Government of São Paulo for the construction and maintenance of **33 new school units in 29 municipalities**.
- Expansion of **full-time education** across the state network.
- Creation of around **35,000 new student places** for middle and high school levels. Modern, accessible schools with **infrastructure for sports, culture, and technology**.

NEW SCHOOLS (West & East Lots)



~USD 420 MILLION
INVESTMENT

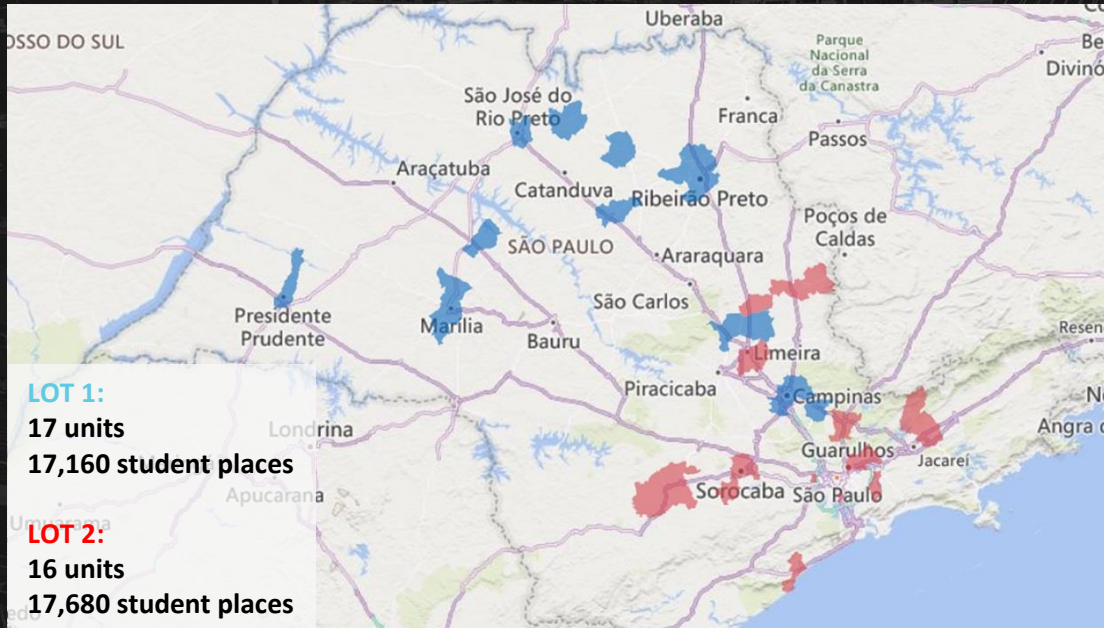
~USD 480 MILLION
OPEX

GREENFIELD
ASSET TYPE

25 YEAR
CONTRACT

33 SCHOOLS
UNITS (2 LOTS)

PUBLIC-PRIVATE PARTNERSTIP
LEGAL STRUCTURE



Lot 01 (17 units / 17,160 student places):

Includes the municipalities of Araras, Bebedouro, Campinas, Itatiba, Jardinópolis, Lins, Marília, Olímpia, Presidente Prudente, Ribeirão Preto, Rio Claro, São José do Rio Preto, Sertãozinho, and Taquaritinga.

Lot 02 (16 units / 17,680 student places):

Includes the municipalities of Aguiá, Arujá, Atibaia, Campinas, Carapicuíba, Diadema, Guarulhos, Itapetininga, Leme, Limeira, Peruíbe, Salto de Pirapora, São João da Boa Vista, São José dos Campos, Sorocaba, and Suzano.

Construction and operation (non-pedagogical services).
 Integrated environments, technology, innovation spaces, and individual study areas.

Notes:

- i. Studies contracted with BNDES.
- ii. Public Consultation closed on 01/15/2024.
- iii. Auction of the East Lot held on 11/04/2024; awarded to the SP + Schools Consortium.

SCHEDULE

SCHEDULE AND INVESTMENT

- Total investment of ~USD 420 MILLION over 25 years.
- Project divided into two lots: East (16 schools) and West (17 schools).
- Construction already underway in the municipalities of Atibaia, São João da Boa Vista, and Aguaí.
- First deliveries expected in 2026.
- The Public-Private Partnership ensures permanent maintenance of all facilities throughout the contract period.

IMPACT AND BENEFITS

PPP New Schools

- ❑ Improved infrastructure and greater efficiency in school management.
- ❑ Long-term maintenance at no additional cost to the State.
- ❑ More time and resources for teachers and administrators to focus on education quality.
- ❑ Safe, modern, and welcoming environments for students and the community.
- ❑ An example of a public policy that combines innovation, efficiency, and social inclusion.





THANK YOU